

DUAL REPLACEMENT CHARCOAL CARTRIDGE

OPERATION MANUAL

132-319

*For Replacement of Charcoal Cartridge(s)
in Pulmonex II Xenon Systems
#132-502, 132-522, 132-503 and 132-523*



BIODEX

Biodex Medical Systems, Inc.

20 Ramsey Road, Shirley, New York, 11967-4704

Tel: 800-224-6339 (Int'l 631-924-9000),

Fax: 631-924-9241 Email: info@biodex.com, www.biodex.com

Dual Cartridge Charcoal Trap Replacement Procedure

(See Figures 1 & 5)

Tools Required: Flat-Head Screwdriver, 5/16" Nut Driver

1. Open the door to the trap. Label the four hoses that connect to the charcoal traps in order to place them back in the correct location. Using the 5/16" nut driver or flat-head screwdriver, disconnect the hose clamps and tubes connected to the top of the lead cartridges. (See Figure 1.)
2. Using the Trigon knobs, remove the two cartridge straps. (See Figure 2.)

NOTE: Check the direction of the fittings on the top of the lead cartridge before removing.

3. Remove the cartridge positioned on the right. (See Figure 3.)
4. Move the cartridge on the left to the position on the right. (See Figure 4.)
5. Place a new cartridge in the left position.

NOTE: Make sure the fittings on the cartridge point in the same direction as on the one you removed.

6. Connect the tubing and hose clamps to their respective fittings. Place the cartridge straps back in their correct location. (See Figure 5.)
7. The system is now ready for use.
8. Perform a mock study (without xenon) to check the system's operation.

NOTE: Be sure to use a bacteria filter when performing a xenon ventilation procedure.



Be sure to record direction of fittings on top of lead cartridge before removing.

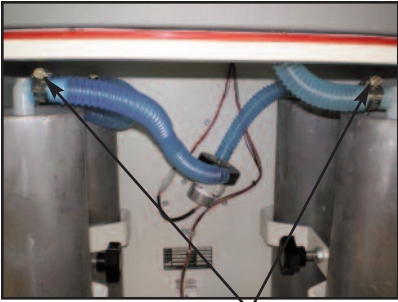


Figure 1 5/16 Clamp



Figure 2 Remove Trigon Knob



Figure 3 Remove Cartridge

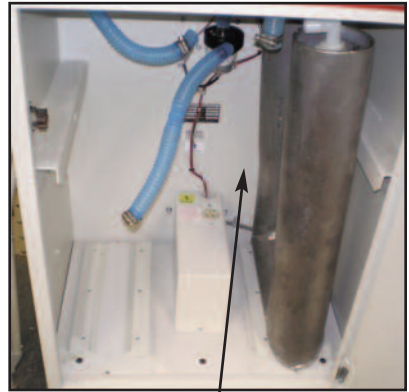


Figure 4 Move left to right



Figure 5 New Cartridge

BIODEX

Biodex Medical Systems, Inc.

20 Ramsey Road, Shirley, New York, 11967-4704

Tel: 800-224-6339 (*Int'l 631-924-9000*),

Fax: 631-924-9241 Email: info@biodex.com, www.biodex.com